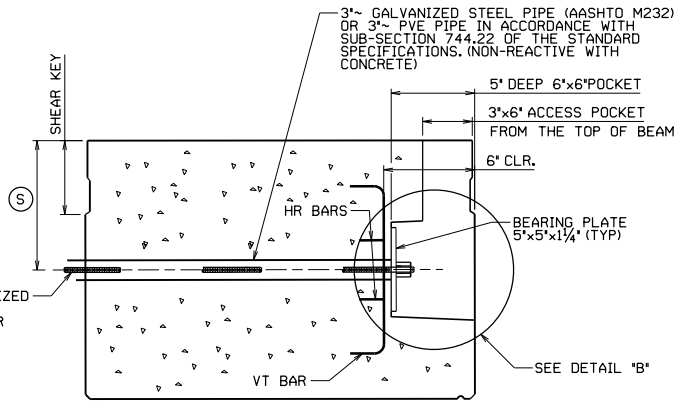


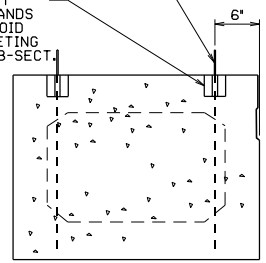
POST-TENSIONING BAR DETAILS



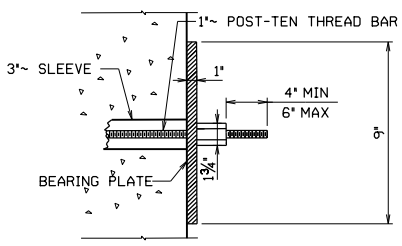
ACCESS POCKET, END POST-TENSIONING BAR

1/2" STRAND LIFTING LOOPS EMBEDDED FULL DEPTH OF BEAM MINUS COVER OF A MINIMUM OF 25 INCHES.
 NUMBER OF STRANDS PER SIDE SHALL BE DETERMINED BY THE FABRICATOR.

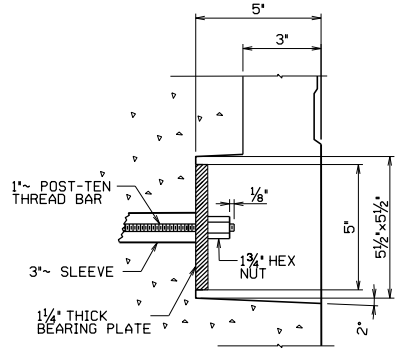
2" OF 3" FOAM BLOCKOUT AFTER ERECTION. CUT STRANDS FLUSH WITH BOTTOM OF VOID AND FILL WITH GROUT MEETING THE REQUIREMENTS OF SUB-SECT. 715.5



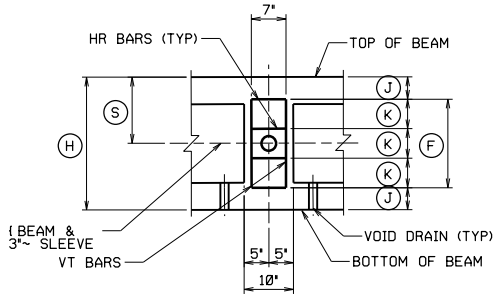
END VIEW



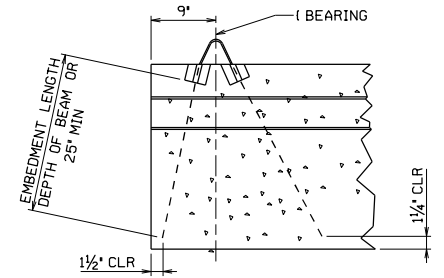
DETAIL 'A'



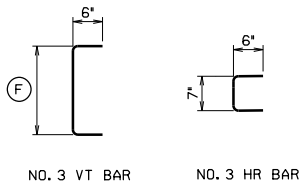
DETAIL 'B'



**REINFORCING DETAILS @ DIAPHRAGM
 EXTERIOR BEAM & POCKETS ONLY**



SIDE VIEW



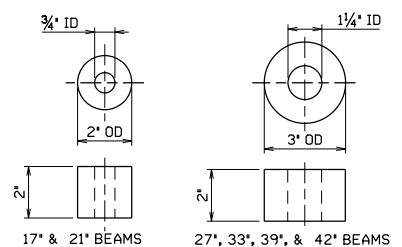
**REINFORCING BAR DETAIL
 ALL BARS GR 60 - EPOXY COATED**

BEAM SIZE	REINFORCEMENT BAR DIM SPACING DIST				
	H	F	J	K	S
IN.	IN.	IN.	IN.	IN.	IN.
17	12	2 1/2	4	8 1/2	
21	12	4 1/2	4	10 1/2	
27	18	4 1/2	6	13 1/2	
33	24	4 1/2	8	16 1/2	
39	30	4 1/2	10	19 1/2	
42	33	4 1/2	11	21	

NOTE:
 SPACE POST-TENSIONING THREAD BARS TO AVOID CONFLICT WITH GUARDRAIL INSERTS.

FINAL POST-TENSIONING FORCE
 TYPE Z BARS = 80 KIPS
 TYPE V BARS = 40 KIPS

SPECIAL WARNING NOTES
 1. DO NOT STAND IN LINE WITH THE POST-TENSIONING BAR DURING TENSIONING PROCEDURES.
 2. NUTS, COUPLERS AND EXTENSION RODS USED IN THE POST-TENSIONING WORK SHALL BE THE MATERIAL APPROVED BY THE MANUFACTURER OF THE HIGH STRENGTH POST-TENSIONING RODS. IN NO CASE SHALL THE CONTRACTOR USE NON-APPROVED MATERIAL OR MATERIAL FROM TWO DIFFERENT SOURCES.



BLOCKOUT DETAILS

LIFTING DETAILS

NOT TO SCALE

PRINT DATE
 14-JUL-2020 06:27

NO.	REVISION	DATE	BY

WEST VIRGINIA DEPARTMENT OF TRANSPORTATION
 DIVISION OF HIGHWAYS

DESIGNED	DATE	CHECKED	DATE
DRAWN	DATE	REVIEWED	DATE

STANDARD BRIDGE PLANS
CONCRETE ADJACENT BOX BEAM
MISCELLANEOUS BEAM DETAIL 1 OF
 SHEET NUMBER ---3000MB1---