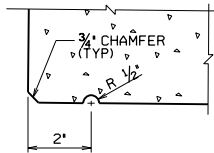
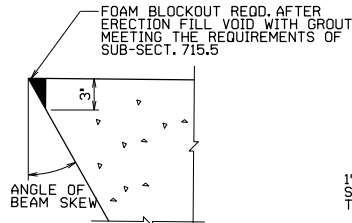


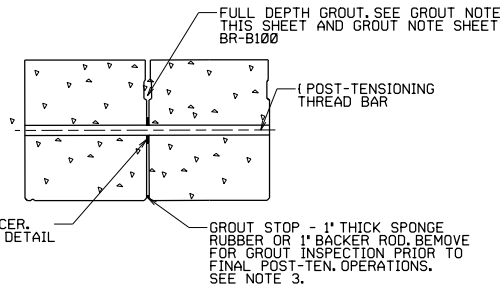
PRINT DATE
14-JUL-2020 06:27



DRIP GROOVE DETAIL
EXTERIOR BEAMS

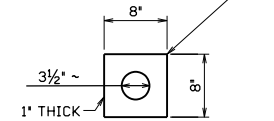


SKEW BLOCKOUT DETAIL



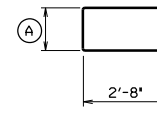
GROUT DETAILS

TYPE 1 SPONGE RUBBER MEETING THE REQUIREMENTS OF 708.1.1 NO COLOR REQUIREMENT

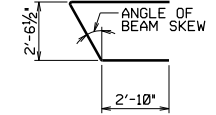


SPACER DETAIL

BEAM DEPTH	A
17"	1'-3 1/4"
21"	1'-4 3/4"
27"	1'-10 3/4"
33"	2'-4 3/4"
39"	2'-10 3/4"
42"	3'-1 3/4"

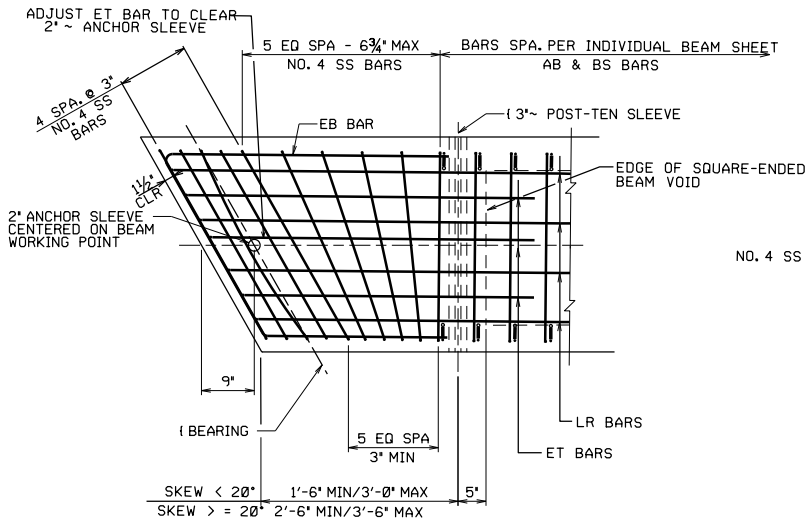


NO. 4 SS BAR

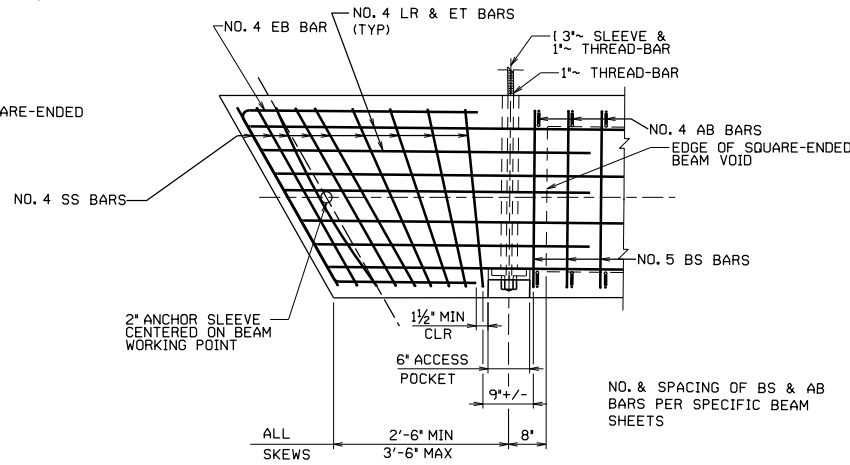


NO. 4 EB BAR

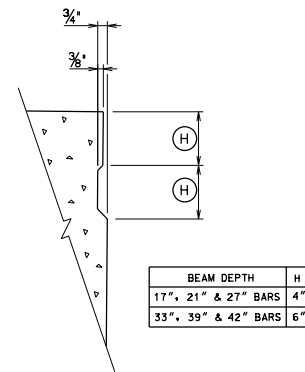
REINFORCING BAR DETAIL
SKEWED BEAMS



END BLOCK DETAIL - SKEWED BEAMS
WO/POST-TEN. ACCESS POCKET



SHEAR REINFORCEMENT DETAIL
BEAMS WITH ACCESS POCKETS



BEAM DEPTH	H
17", 21" & 27" BARS	4"
33", 39" & 42" BARS	6"

SHEAR KEY DETAIL

WEST VIRGINIA DEPARTMENT OF TRANSPORTATION
DIVISION OF HIGHWAYS

DESIGNED ON	DATE	CHECKED	DATE
DRAWN	DATE	REVIEWED	DATE

STANDARD BRIDGE PLANS
CONCRETE ADJACENT BOX BEAM
MISCELLANEOUS BEAM DETAIL 2 OF 2
SHEET NUMBER 300MB2

NO.	REVISION	DATE	BY

NOT TO SCALE