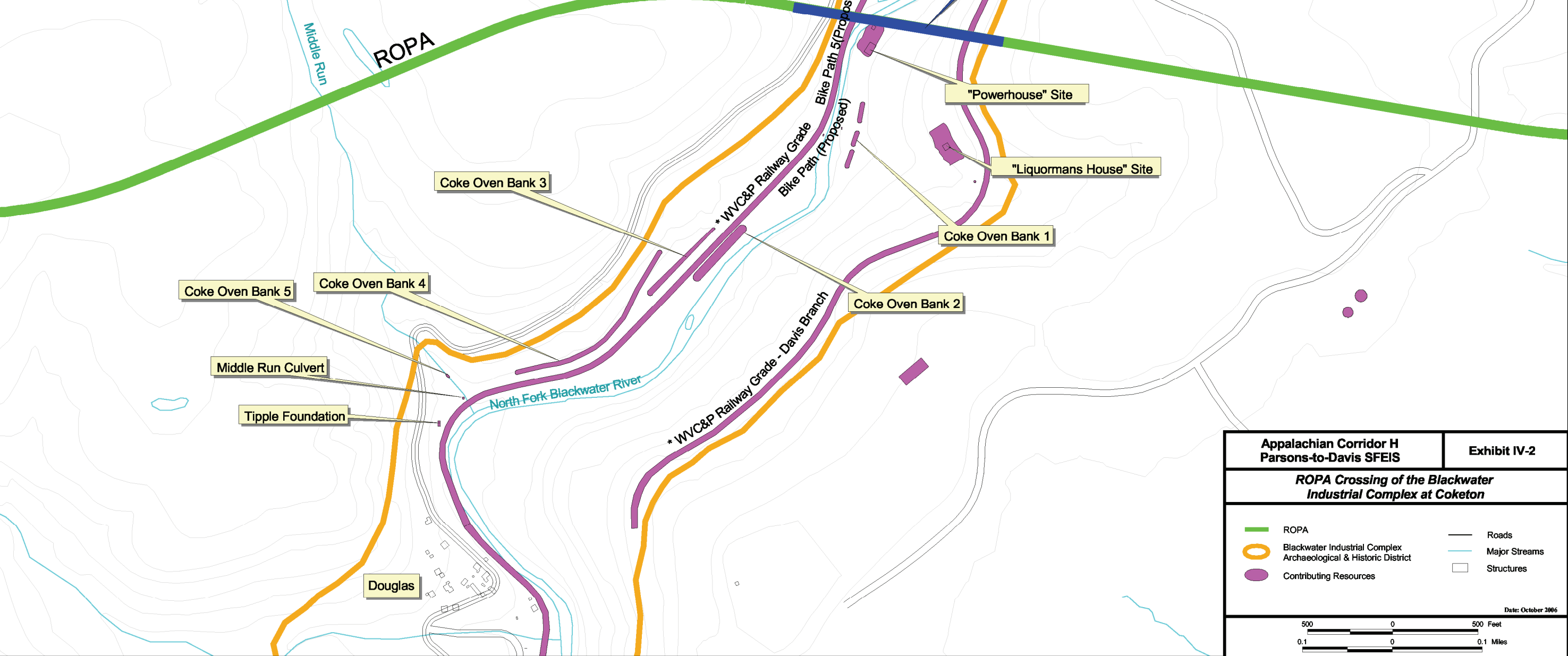
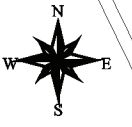
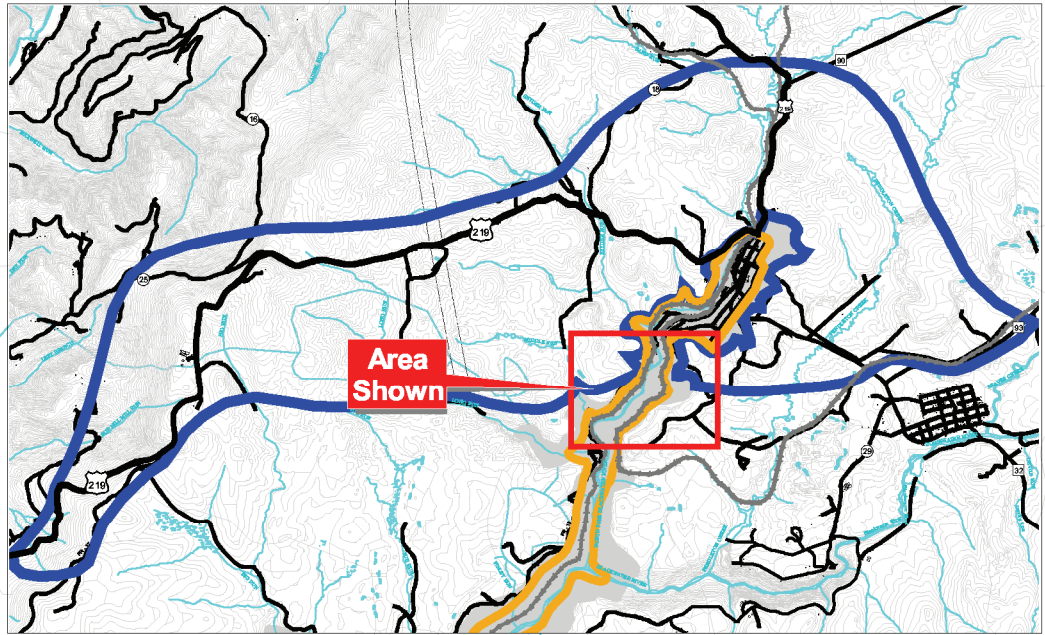


Appalachian Corridor H Parsons-to-Davis SFEIS		Exhibit IV-1
Section 4(f) Resources and ROPA		
Study Area	Blackwater Industrial Complex Archaeological & Historic District	WVC&P Railway *NRHP Eligible
Revised Original Preferred Alternative	Stone Arch Bridge Location	City of Thomas Park(Proposed)
Rail Grades	Blackwater Area	Major Streams
Date: October 2006		



Appalachian Corridor H Parsons-to-Davis SFEIS		Exhibit IV-2
ROPA Crossing of the Blackwater Industrial Complex at Coketon		
ROPA	Blackwater Industrial Complex Archaeological & Historic District	Major Streams
Contributing Resources	Roads	Structures
Date: October 2006		